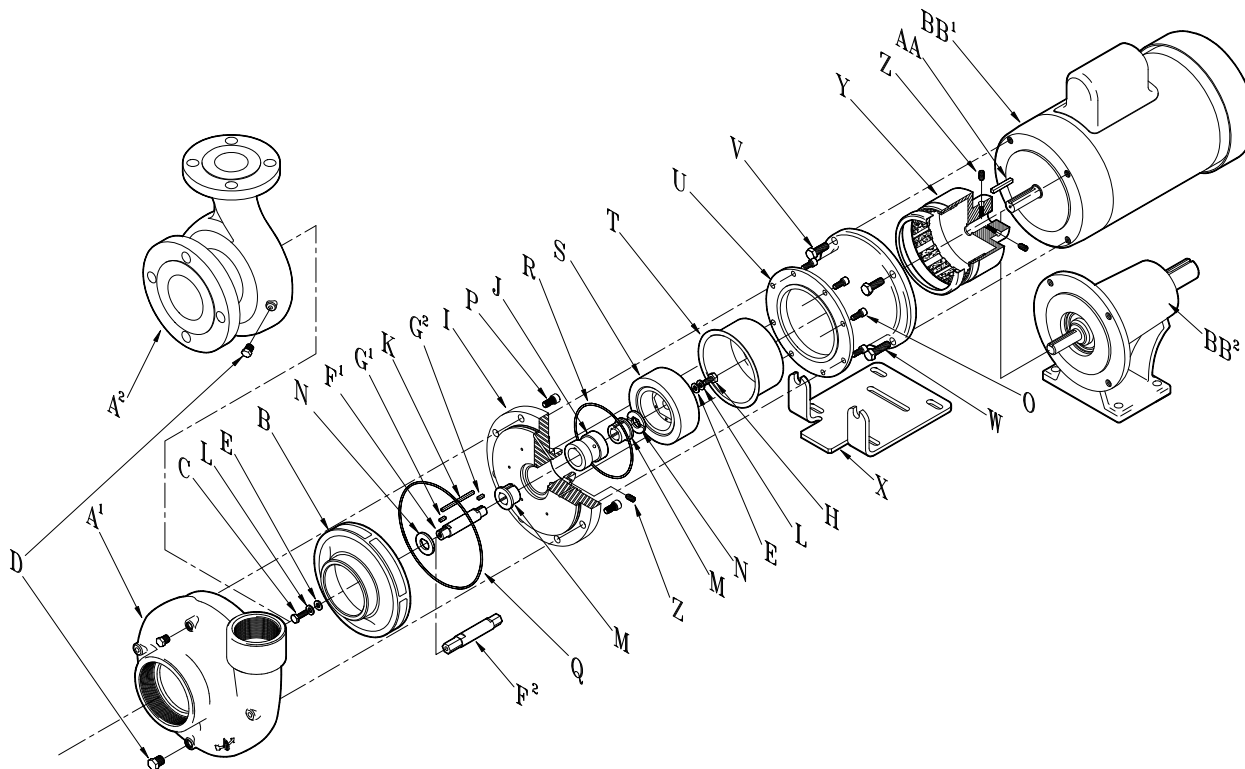




**PRICE PUMP CO.**

## XT/XL Mag Drive Parts List

Effective: April 7, 2009



Description	100	150	200
A <sup>1</sup> . Volute, Threaded (XT)	2629	2626	2627
A <sup>2</sup> . Volute, Flanged (XL)	2605	2611	2617
B. Impeller, Keyed (0-7.5 HP)	3954	3955	-----
Impeller, HEX (10-15 HP)	-----	3956	3957
Description	All		
C. Impeller Lockdown Bolt (0-7.5 HP)	0585		
Impeller Lockdown Bolt (0-10 HP)	0596		
D. Pipe Plug (2 req.)	0559		
E. Lockdown Washer (2 req.)	2423		
F <sup>1</sup> . Shaft, Keyed, 316SS (0-7.5 HP-Std)	3695		
For carbon/ceramic bushings			
Shaft, Keyed, Tungsten Coated (0-7.5 HP-Opt)	3695-30		
For silicon carbide bushings			
F <sup>2</sup> . Shaft, Hex, 316SS (10-15 HP-Std)	3941		
For carbon/ceramic bushings			
Shaft, Hex, Tungsten Coated (10-15 HP-Opt)	3941-30		
For silicon carbide bushings			
G <sup>1</sup> Impeller Shaft Key (1 req.)	0136		
For Keyed Design			
G <sup>2</sup> Magnet Shaft Key (1 req.)	2424		
For Keyed Design			
H. Magnet Lockdown Bolt	0596		
I. Separator Plate	3944		
J. Bushing Sleeve	3697		
K. Bushing Key	2464		

Description	All
L. Vibration Washer (2 req.)	2344
M. Thrust Bushing (2 req.)	
Carbon (std)	3699
Silicon Carbide (Opt)	3630
N. Thrust Washer (2 req.)	
Ceramic (Std)	3700
Silicon Carbide (Opt)	3629
O. Drive Housing Bolts (8 req.)	2466
P. Volute Bolts (8 req.)	0722
Q. Volute O ring	0865
R. Magnet Cup O ring	2465
S. Driven Magnet, Keyed (0-7.5 HP)	3627
Driven Magnet, HEX (10-15 HP)	3634
T. Magnet Cup	2454
U. Drive Housing	3626
V. Motor Bolts (Top) (2req.)	0579
W. Motor Bolts (Bottom) (2 req.)	3083
X. Base Plate	8017
Y. Drive Magnet 5/8" Bore (0-7.5 HP)	2471
Drive Magnet 7/8" Bore (0-7.5 HP)	2471-1
Drive Magnet 7/8" Bore (10-15 HP)	2477
Z. Setscrew (5 req.)	2452
AA. Motor Shaft Key	2472
BB <sup>1</sup> . Electric Motor	Specify P/N
BB <sup>2</sup> . Power Frame 5/8"	5478
Power Frame 7/8"	5501