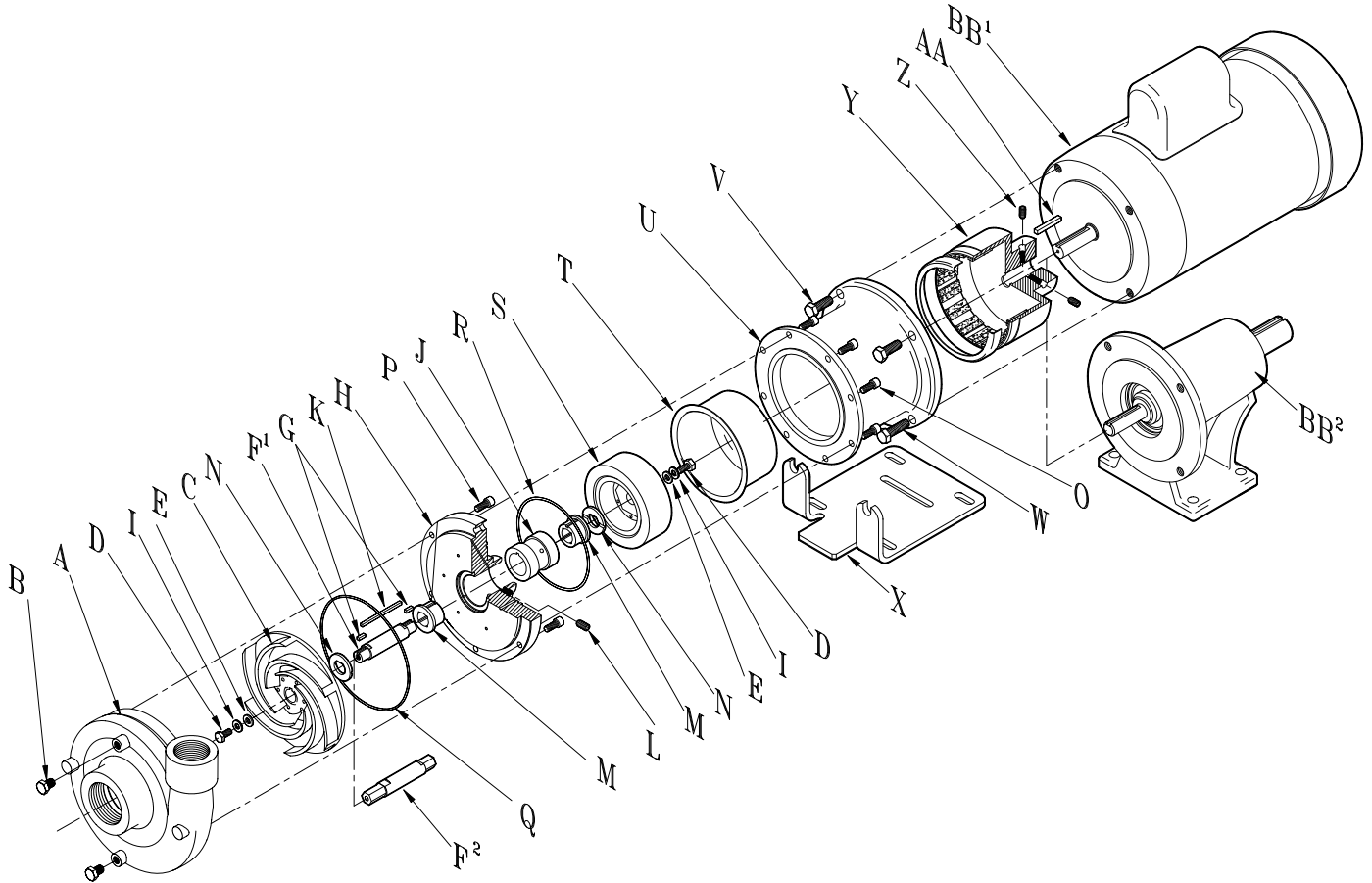




PRICE PUMP CO.

CL150SS Mag Drive Parts List

Effective: April 7, 2009



Description	P/N	Description	P/N
A. Volute	3503-O	N. Thrust Washer (2 req.)	
B. Pipe Plug (2 req.)	0559	Ceramic (Std)	3700
C. Impeller, Keyed (0-7.5 HP)	3502MD-5.76	Silicon Carbide (Opt)	3629
Impeller, Hex (10-15 HP)	3953-5.76	O. Drive Housing Bolts (8 req.)	2466
D. Lockdown Bolt (2 req.)	0596	P. Volute Bolts (6 req.)	51-640-SS
E. Lockdown Washer (2 req.)	2423	Q. Volute O ring (Viton std)	0865
F ¹ . Shaft 316 SS (0-7.5 HP-Std)	3695	R. Magnet Cup O ring (Viton std)	2465
For carbon/ceramic bushings		S1. Driven Magnet (0-7.5 HP)	3627
Shaft Tungsten Coated (0-7.5 HP-Opt)	3695-30	S2. Driven Magnet (10-15 HP)	3634
For silicon carbide bushings		T. Magnet Cup	2454
F ² . Shaft, Hex, 316SS (10-15 HP-Std)	3941	U. Drive Housing	3626
For carbon/ceramic bushings		V. Motor Bolts (Top) (2req.)	0579
Shaft, Hex, Tungsten Coated (10-15 HP-Opt)	3941-30	W. Motor Bolts (Bottom) (2 req.)	3083
For silicon carbide bushings		X. Base Plate	8017
G. Shaft Key (2 req.)	2424	Y. Drive Magnet 5/8" Bore (0-7.5 HP)	2471
For Keyed Design		Drive Magnet 7/8" Bore (0-7.5 HP)	2471-1
H. Separator Plate	3943	Drive Magnet 7/8" Bore (10-15 HP)	2477
I. Vibration Washer (2 req.)	2344	Z. Setscrew (2 req.)	2452
J. Bushing Sleeve	3697	AA. Motor Shaft Key	2472
K. Bushing Key	2464	BB ¹ . Electric Motor	Specify P/N
L. Setscrew (2 req.)	2452	BB ² . Power Frame	5478
M. Thrust Bushing (2 req.)		Power Frame	5501
Carbon (std)	3699		
Silicon Carbide (Opt)	3630		